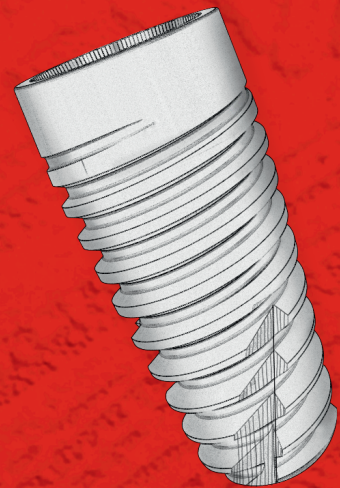




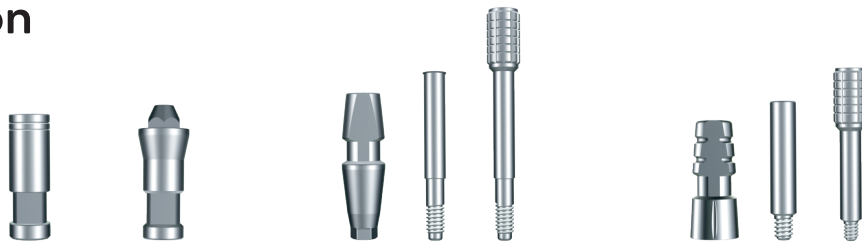
# Dentcon

Dental Implant Systems



2026 DENTCON PRODUCT BROCHURE

## ► Impression



**Product**

**Type**

**Analog**

Multi Unit - Standard

**Transfer Coping**

Closed Tray - Open Tray

**Transfer Coping**

Multi Unit Closed Tray - Multi Unit Open Tray

## ► Temporary Abutment



**Product**

**Type**

Temporary Abutment

Titanium

Temporary Abutment

Plastic Hex - Plastic Non Hex

## ► Locator and Ball Abutment



**Product**

**Type**

Locator

1 mm - 2 mm - 3 mm - 4 mm - 5 mm - 7 mm



**Product**

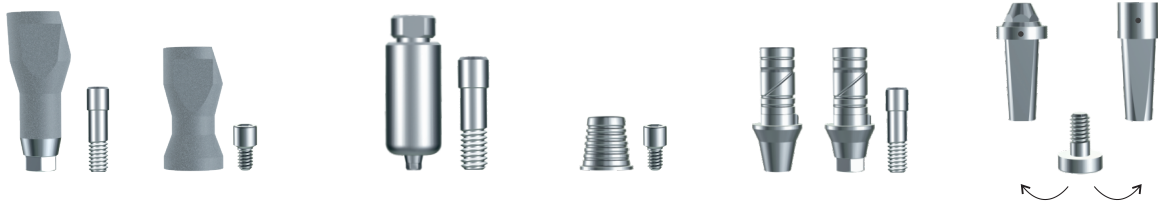
**Type**

Ball Abutment

1 mm - 2 mm - 3 mm - 4 mm - 5 mm - 7 mm

## ► Digital Accessories

3D data for Dentcon Dental Implant System products is available in the libraries of Exocad, with regular updates applied to ensure accuracy. We collaborate closely with our software partners to provide clinicians with the most up-to-date solutions.



**Product**

**Type**

**Scan Body**

Scan Body - Multi Unit Scan Body

**Ti Base**

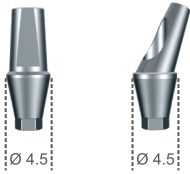
Multi Unit - Standard Hex - Non Hex (0.5 - 1.5-2.5)

**Digital Analog**

Standard - Multi Unit

**Premilled Abutment**

## ► Cemented Abutment



### Product

**GH**

**Straight Abutment**

1 mm - 2 mm - 3 mm - 4 mm

### Product

**Angle**

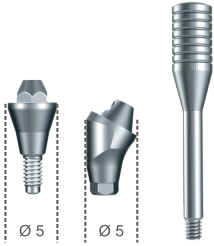
**GH**

**Angled Abutment**

15° | 25°

1 mm - 2 mm - 3 mm - 4 mm

## ► Multi Unit Abutment



### Product

**GH**

**Straight M.U. Abutment**

1 mm - 2 mm - 3 mm - 4 mm - 5 mm - 7 mm

### Product

**Angle**

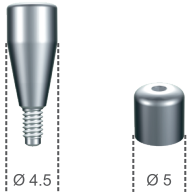
**GH**

**Angled M.U. Abutment**

17° | 30°

1 mm - 3 mm

## ► Healing



### Product

**GH**

**Gingiva Former**

2 mm - 3 mm - 5 mm - 7 mm

**Multi Unit Healing Cap**

5 mm

## ► Wide Body

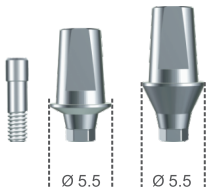


### Product

**GH**

**Wide Body Gingiva Former**

3 mm - 5 mm

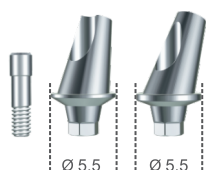


### Product

**GH**

**Wide Body Straight Abutment**

1 mm - 3 mm



### Product

**GH**

**Wide Body Angled Abutment**

1 mm - 3 mm

# GENERAL FEATURES



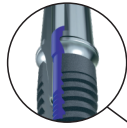
## Diameter

## Lengths

	3.5	6 mm - 8 mm - 10 mm - 11,5 mm - 13 mm
	4.0	6 mm - 8 mm - 10 mm - 11,5 mm - 13 mm
	4.5	6 mm - 8 mm - 10 mm - 11,5 mm - 13 mm
	5.0	6 mm - 8 mm - 10 mm - 11,5 mm - 13 mm

### Platform Switching

With its platform switching feature, Dentcon shifts the implant–abutment interface inward, helping distribute occlusal forces more centrally within the implant. This design contributes to the protection of the crestal bone and helps prevent implant neck resorption.



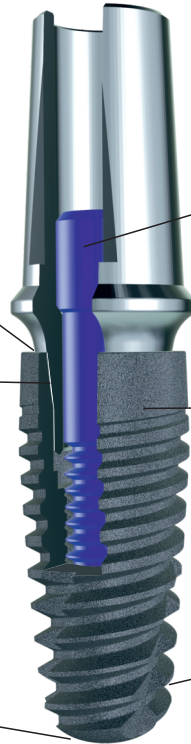
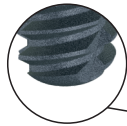
### 11° Internal Conical Hex Connection

The 11° conical connection design provides a long-lasting and reliable prosthetic connection.



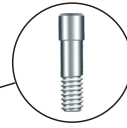
### Rounded Apex

Thanks to the rounded apex, safer placement of the implant is facilitated and tissue damage is reduced.



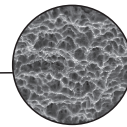
### Improved Screw

With the improved M2.0 screw, Dentcon provides a stronger connection.



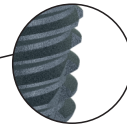
### SLA Surface

With its SLA Hydrophilic surface, Dentcon promotes a rapid osseointegration process.



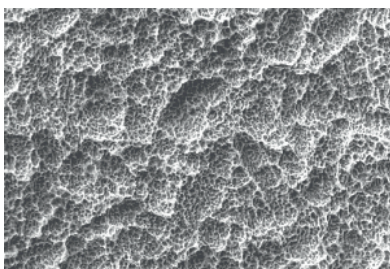
### Self Cutting Thread

Self-tapping & cutting thread grooves allow for easy insertion and optimum initial stability with a 0.8 mm thread pitch.

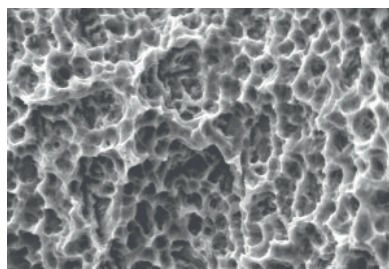


# HYDROPHILIC SLA SURFACE

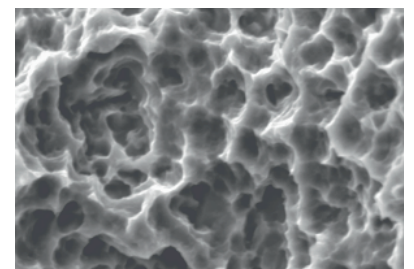
The Dentcon surface is specifically engineered to enhance cell adhesion, accelerate osseointegration, and support predictable long-term clinical outcomes. The surface treatment begins with a mechanical roughening process through sandblasting using aluminium oxide particles. This step is followed by a controlled chemical treatment involving large acid etching and thorough cleaning procedures to create a micro-structured surface topography. To further enhance biological activity, the surface is activated using cold argon plasma, resulting in a highly clean and hydrophilic surface with increased surface energy. This process produces a homogeneous micro-porous structure characterized by micro-pits with diameters ranging between 25–35 µm. The optimized micro-topography promotes osteoblastic cell adhesion and supports early bone formation at the implant surface. The combination of controlled roughness, high surface cleanliness, and hydrophilic properties improves the interaction between bone and implant, resulting in strong primary anchorage and increased resistance to removal torque. For these reasons, this advanced surface treatment approach represents one of the most effective and widely accepted methods in modern implantology for reducing osseointegration time while improving the quality and stability of bone-to-implant contact.



1.00 K X

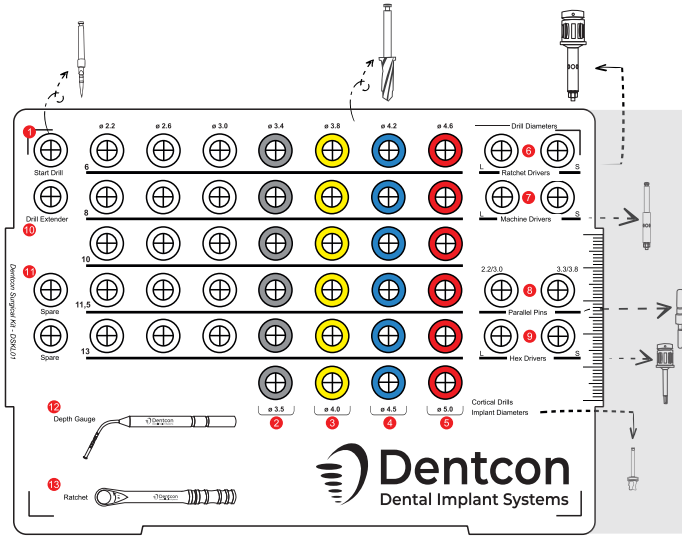


5.00 K X



10.00 K X

# Surgical Kits



## Code Component Name

- 1 Drill Set
- 2 Cortical Drill  $\phi 3.5$
- 3 Cortical Drill  $\phi 4.0$
- 4 Cortical Drill  $\phi 4.5$
- 5 Cortical Drill  $\phi 5.0$
- 6 Ratchet Drivers S|L
- 7 Machine Drivers S|L
- 8 Parallel Pins (Thin - Thick)
- 9 Hex Drivers S|L
- 10 Drill Extender
- 11 Spare
- 12 Depth Gauge
- 13 Ratchet

### 1 Drill Set

Drill Lengths

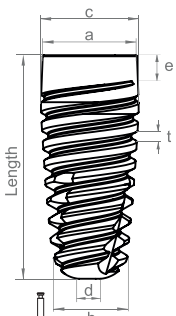
6, 8, 10, 11.5, 13 mm

Drill Diameters

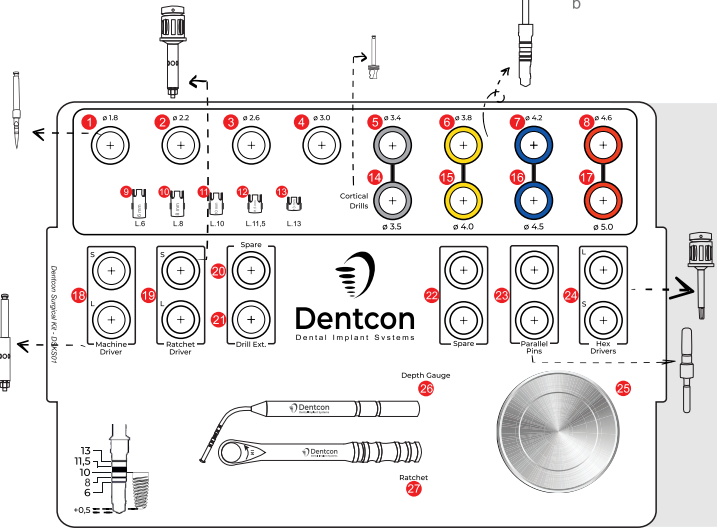
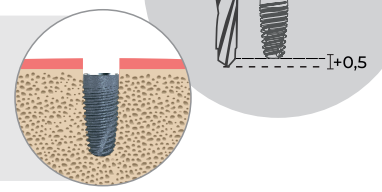
$\phi 2.2, \phi 2.6, \phi 3.0$   
 $\phi 3.4, \phi 3.8, \phi 4.2, \phi 4.6$  mm

Diameter	3.5mm	4.0mm	4.5mm	5.00mm
a	3.75mm	4.00mm	4.35mm	4.80mm
b	3.00mm	3.20mm	3.62mm	4.00mm
c	3.85mm	4.15mm	4.50mm	4.95mm
d	0.40mm	0.90mm	0.90mm	0.90mm
e	1.11mm	1.11mm	1.11mm	1.11mm

Thread Distance  
t: 0.8 mm



Dentcon Dental Implant Systems drills are 0.5 mm longer than implant lengths. Planning should be made accordingly.



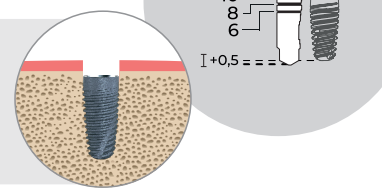
## Code Component Name

- 1 Start Drill
- 2 Drill 02.2
- 3 Drill 02.6
- 4 Drill 03.0
- 5 Drill 03.4
- 6 Drill 03.8
- 7 Drill 04.2
- 8 Drill 04.6
- 9 Stopper L. 6 mm
- 10 Stopper L. 8 mm
- 11 Stopper L. 10 mm
- 12 Stopper L. 11.5 mm
- 13 Stopper L. 13 mm
- 14 Cortical Drill  $\phi 3.5$

## Code Component Name

- 15 Cortical Drill  $\phi 4.0$
- 16 Cortical Drill  $\phi 4.5$
- 17 Cortical Drill  $\phi 5.0$
- 18 Machine Driver S|L
- 19 Ratchet Driver S|L
- 20 Spare
- 21 Drill Extender
- 22 Spare
- 23 Parallel Pin (Thin - Thick)
- 24 Hex Drivers
- 25 Bowl
- 26 Depth Gauge
- 27 Ratchet Wrench

Dentcon Dental Implant Systems drills are 0.5 mm longer than implant lengths. Planning should be made accordingly.



# Powered by Innovation





 **Dentcon**

is a brand of Dentimplant

Dentimplant Medikal Sağlık İç Dış Tic. San. A.Ş.

info@dentimplant.com.tr

www.dentimplant.com.tr | www.dentconimplant.com

 2292



@dentimplant.tr  
@dentcon.global



@Dentimplant01  
@DentconGlobal



@dentimplant



@dentimplantr



@dentimplantturkey